

# DATASHEET | ARM-O, -OE

Aurora Resistojet Module – Orbit control, with External tank variant

## ARM PRODUCT FAMILY

The ARM products provide an array of 1-12 individual water resistojet thrusters with a shared tank for a variety of use cases. The products are intended for any nano- and microsatellite sizes, with specific CubeSat form factor variants being developed for off-the-shelf delivery.

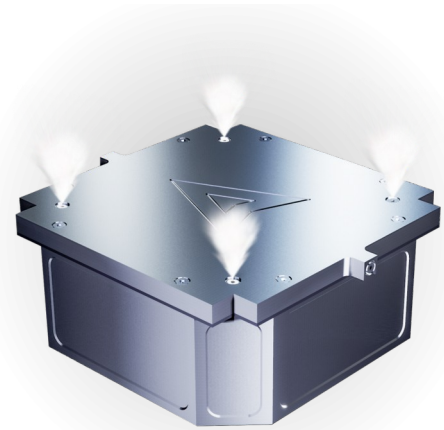
### ARM-O

The simplest variant of the family: thrust generation to one direction. For minor orbital changes, collision avoidance and station keeping. 1-4 thrusters depending on size and thrust requirements.

### ARM-OE

External tank variant; propellant is fed from the platform instead of an integrated tank.

Ideal for satellites that have low-thrust electric propulsion system and require higher thrust for some maneuvers, or have a chemical propulsion system and require more accuracy. Works with practically any fluid propellant. Contact [sales@aurorapt.fi](mailto:sales@aurorapt.fi) for details.



## ARM-O SPECIFICATION

Values are preliminary; some design delta required for each option. Also custom tank sizes are available upon request.

Tank variant	AS	A0, A1	A2	B1 - B4
Form	3*3*5 cm <sup>3</sup>	0.3 – 0.5 U	1 U	0.5 – 2 U
Target sat	Any nano-/pico-	1-3 U	1-3 U	6 U
Idle power	50 mW			
Active power	3 – 5 W/mN			
Thrust	0.6 – 4 mN *			
Isp	100 s (estimate)			
Thrusters	1	2 or 4	2 or 4	2 or 4
Impulse	1 – 3 Ns	50 – 100 Ns	300 – 500 Ns	300 – 1000 Ns
Wet mass	< 50 g	300 – 500 g	1000 g	2000 g
Dry mass	< 50 g	< 400 g	< 700 g	< 1500 g
Availability	6-12 months from order			

\* Adjustable; per active thruster